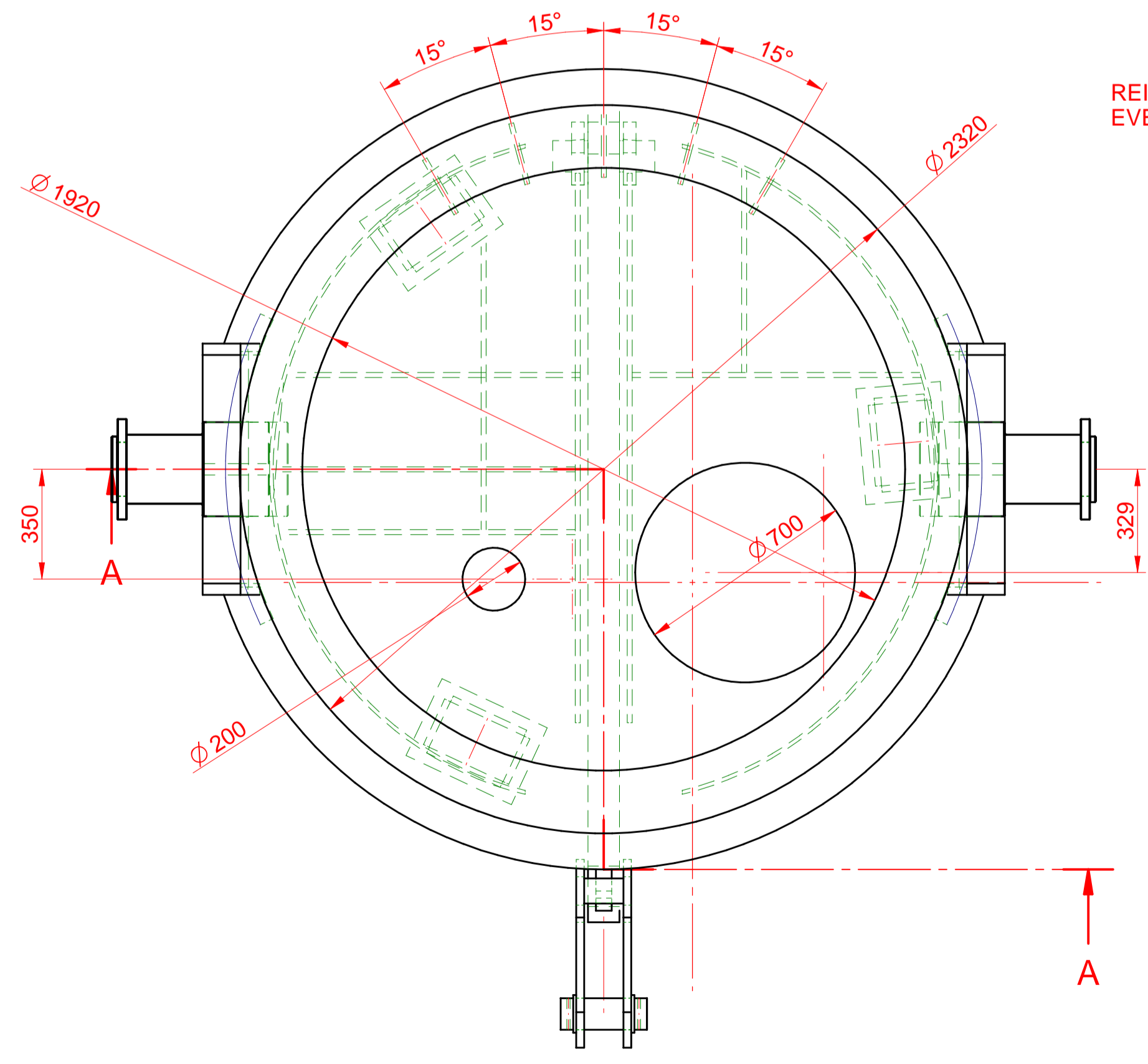
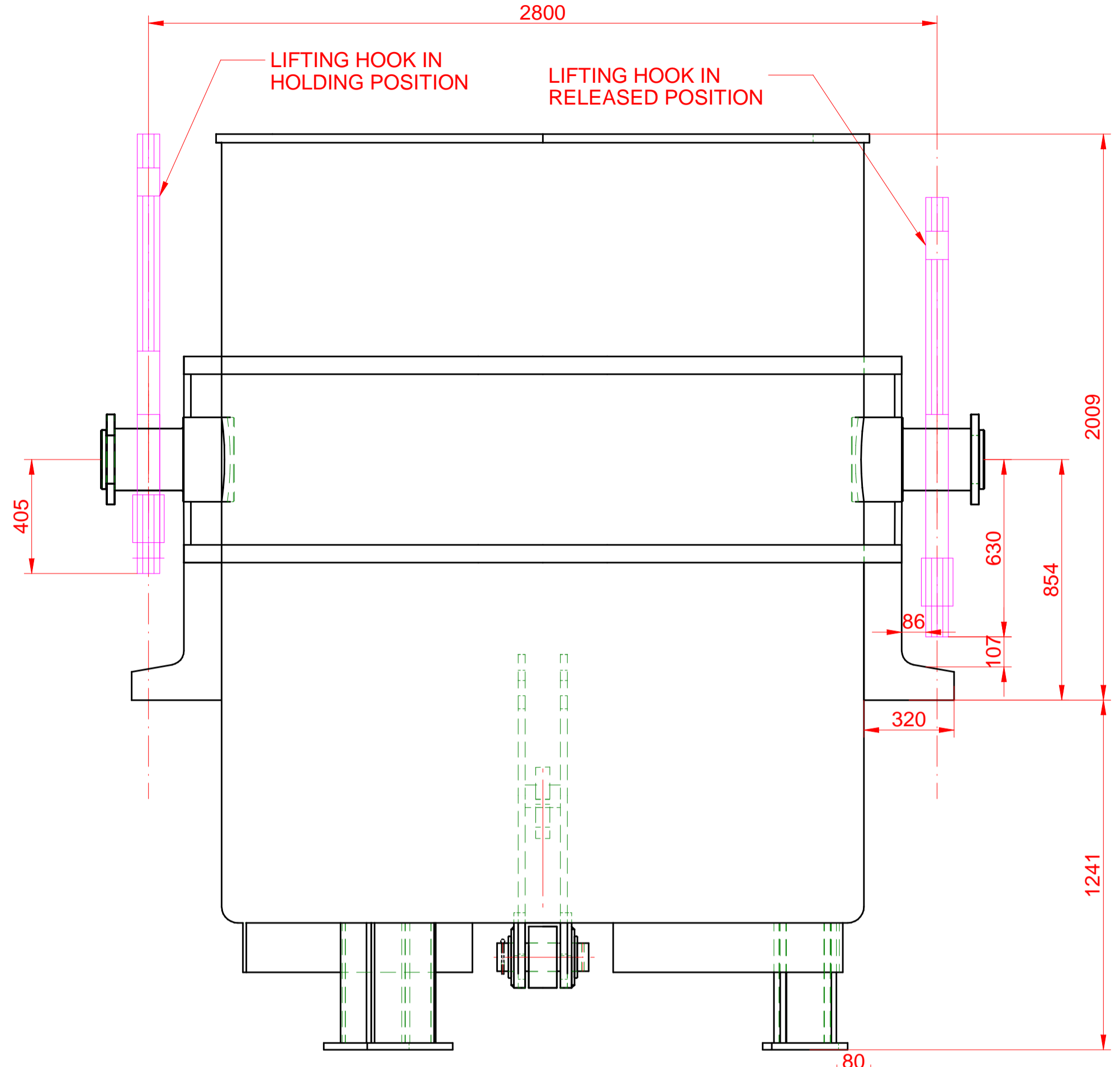
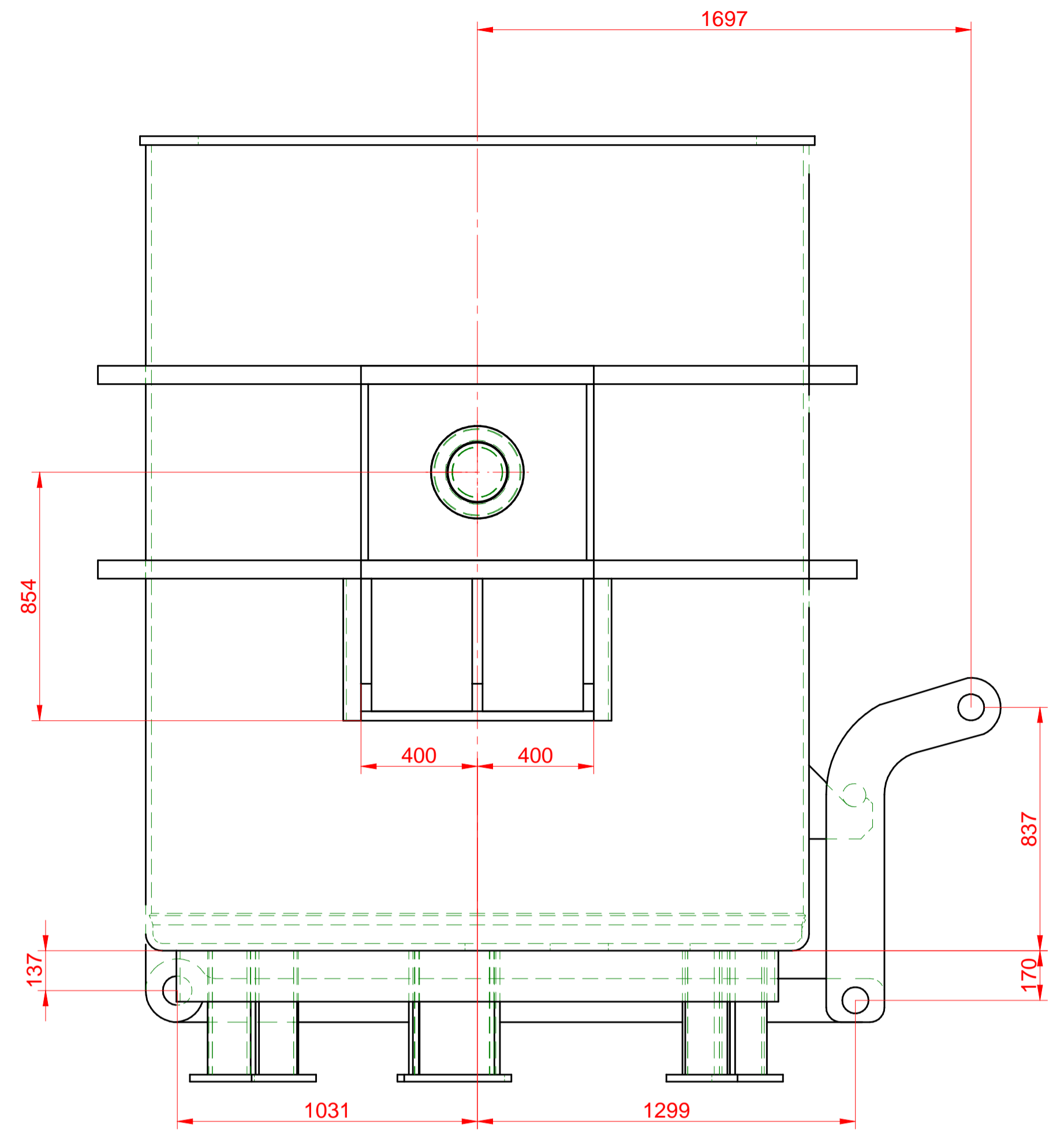
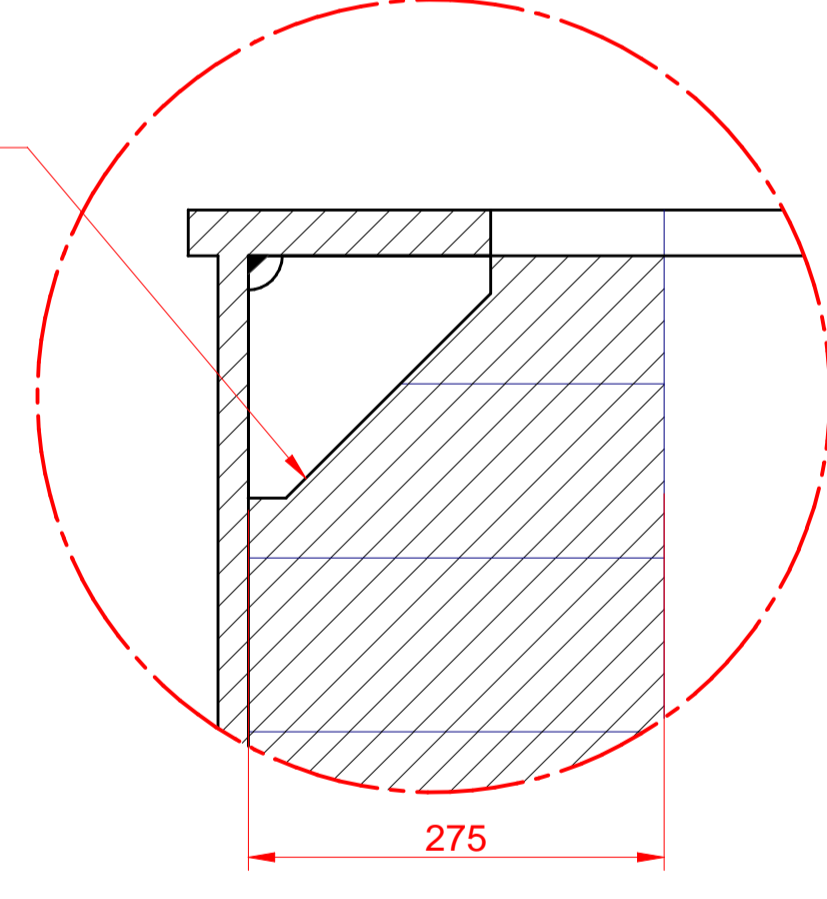


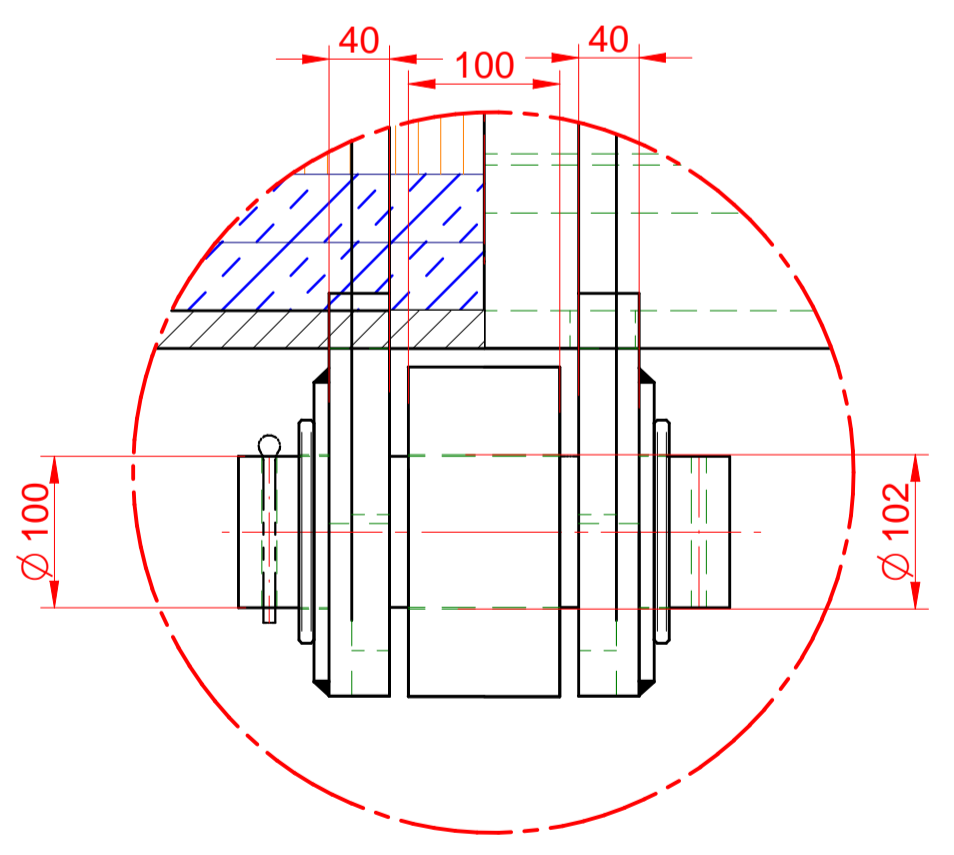
SECTION A-A



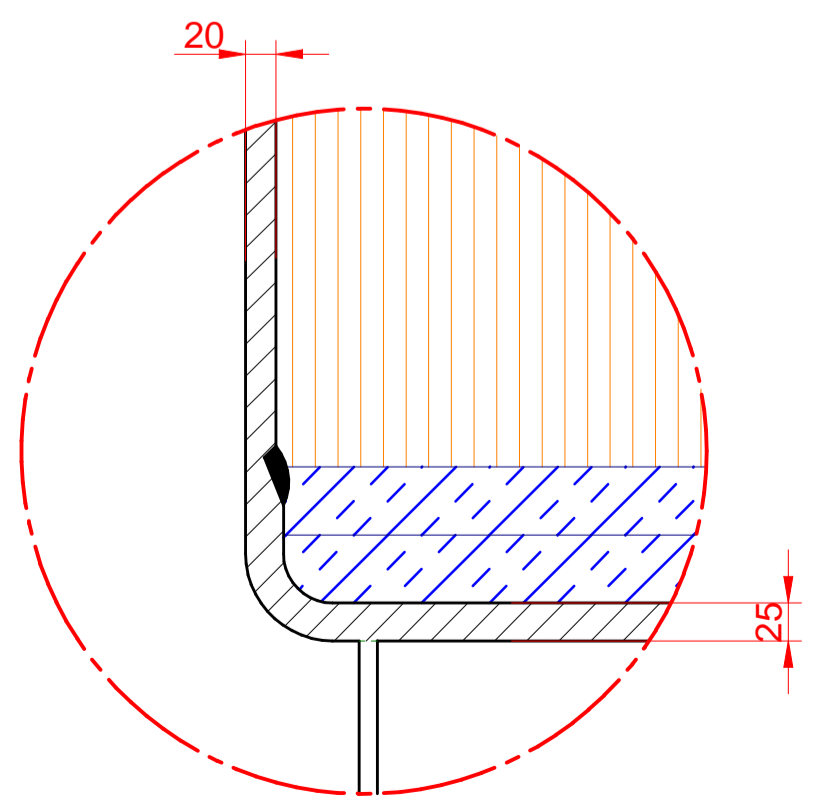
REINFORCEMENTS 16 thk EVERY 15°



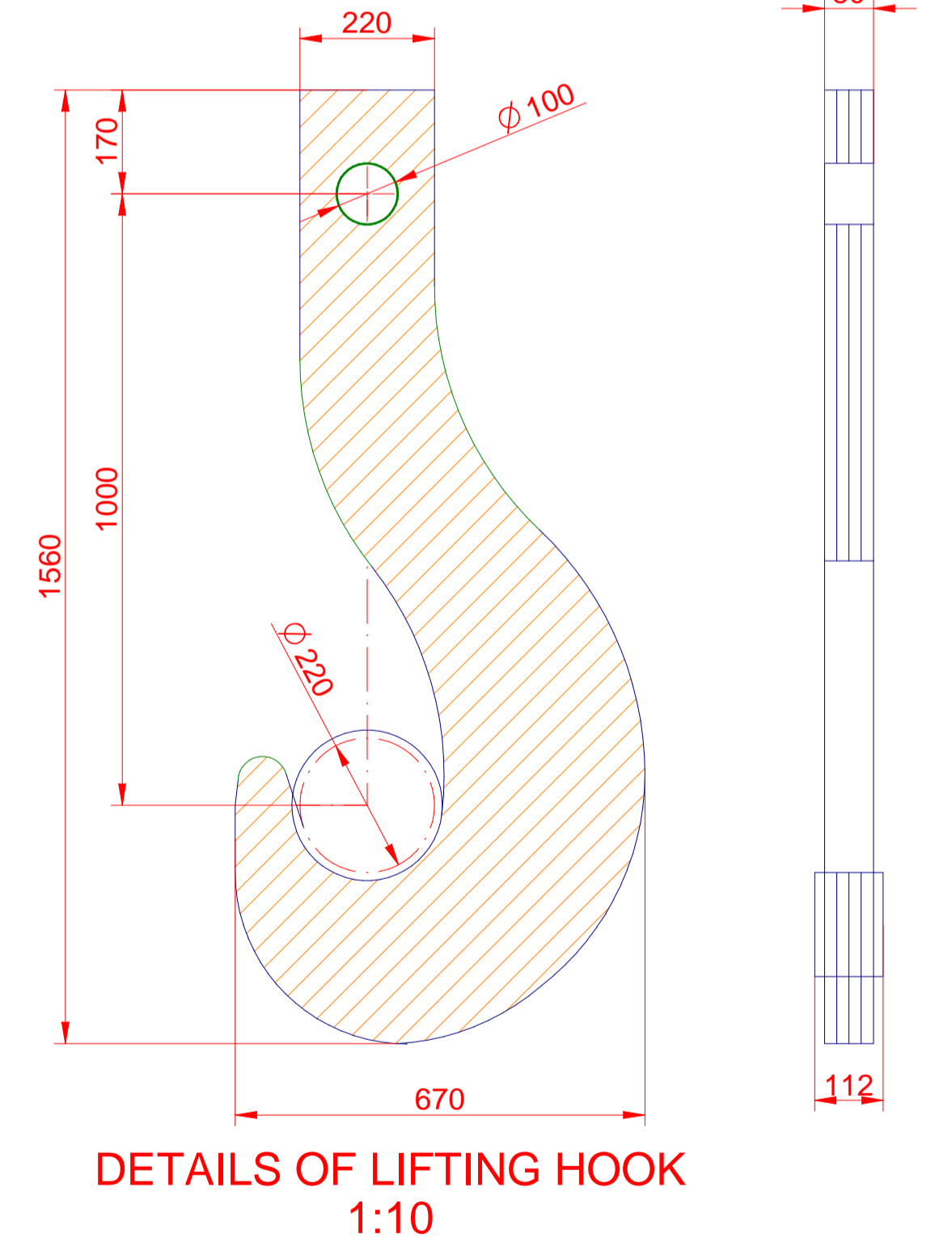
DETAIL E
1:5



DETAIL F
1:5



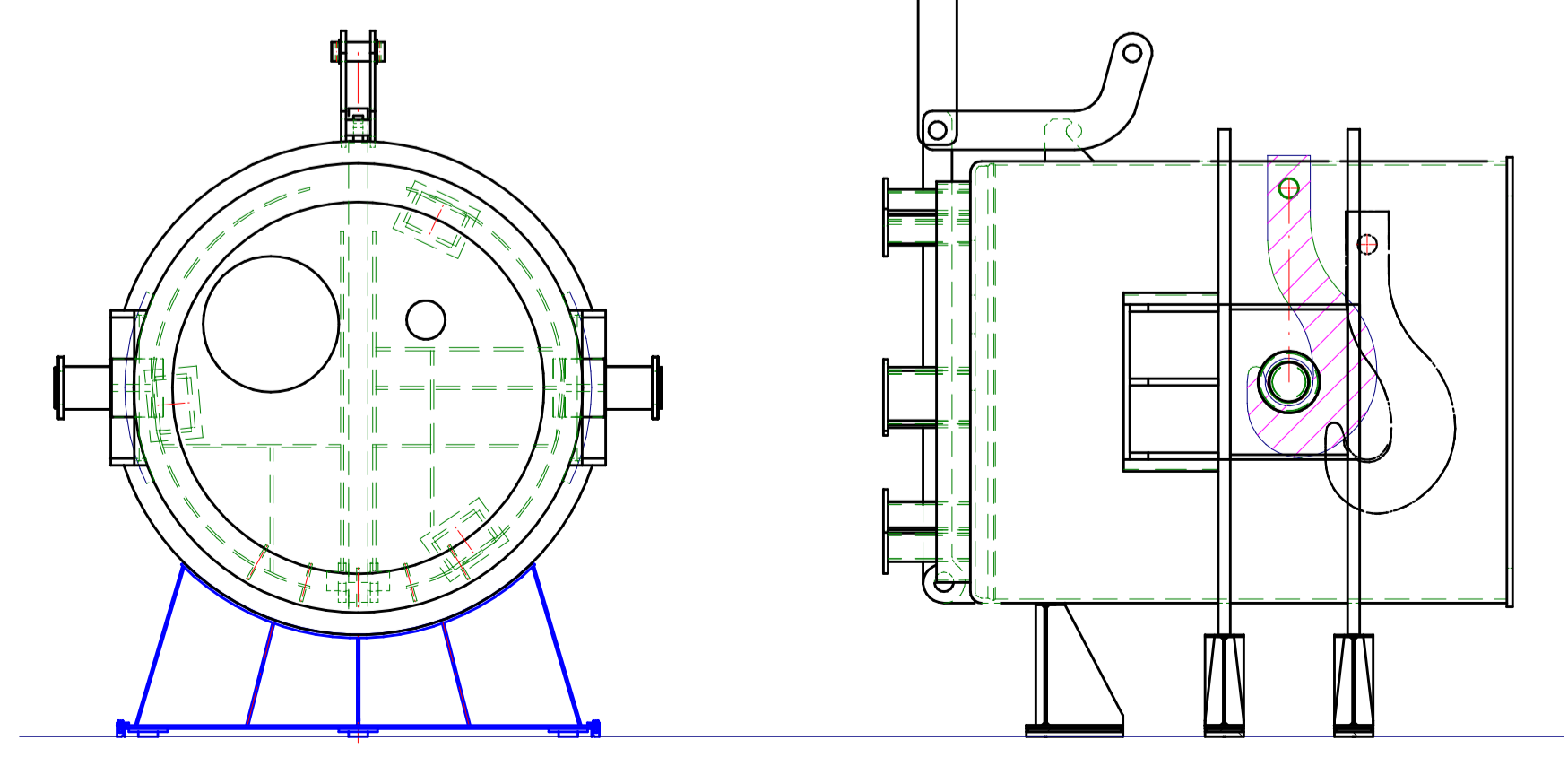
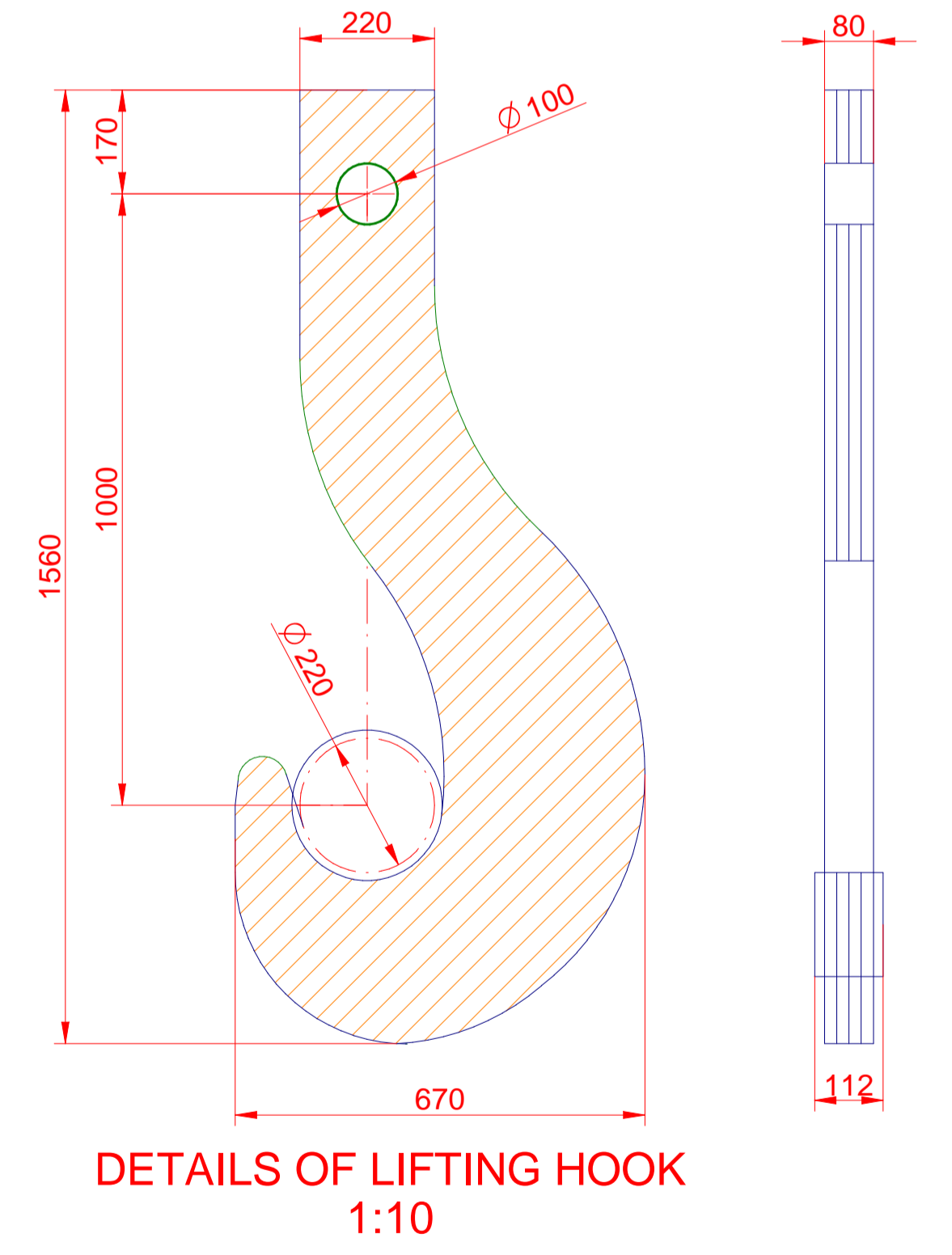
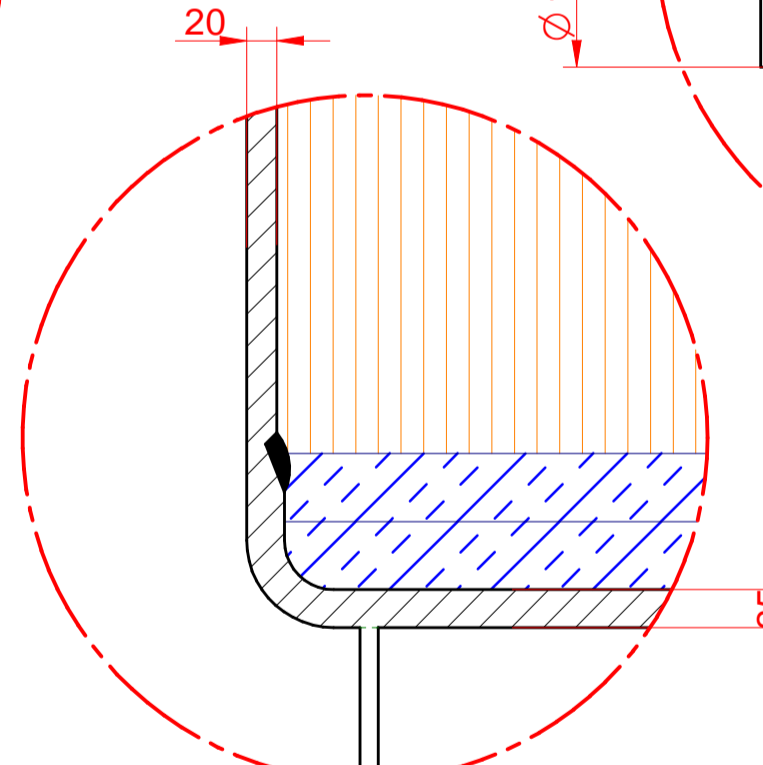
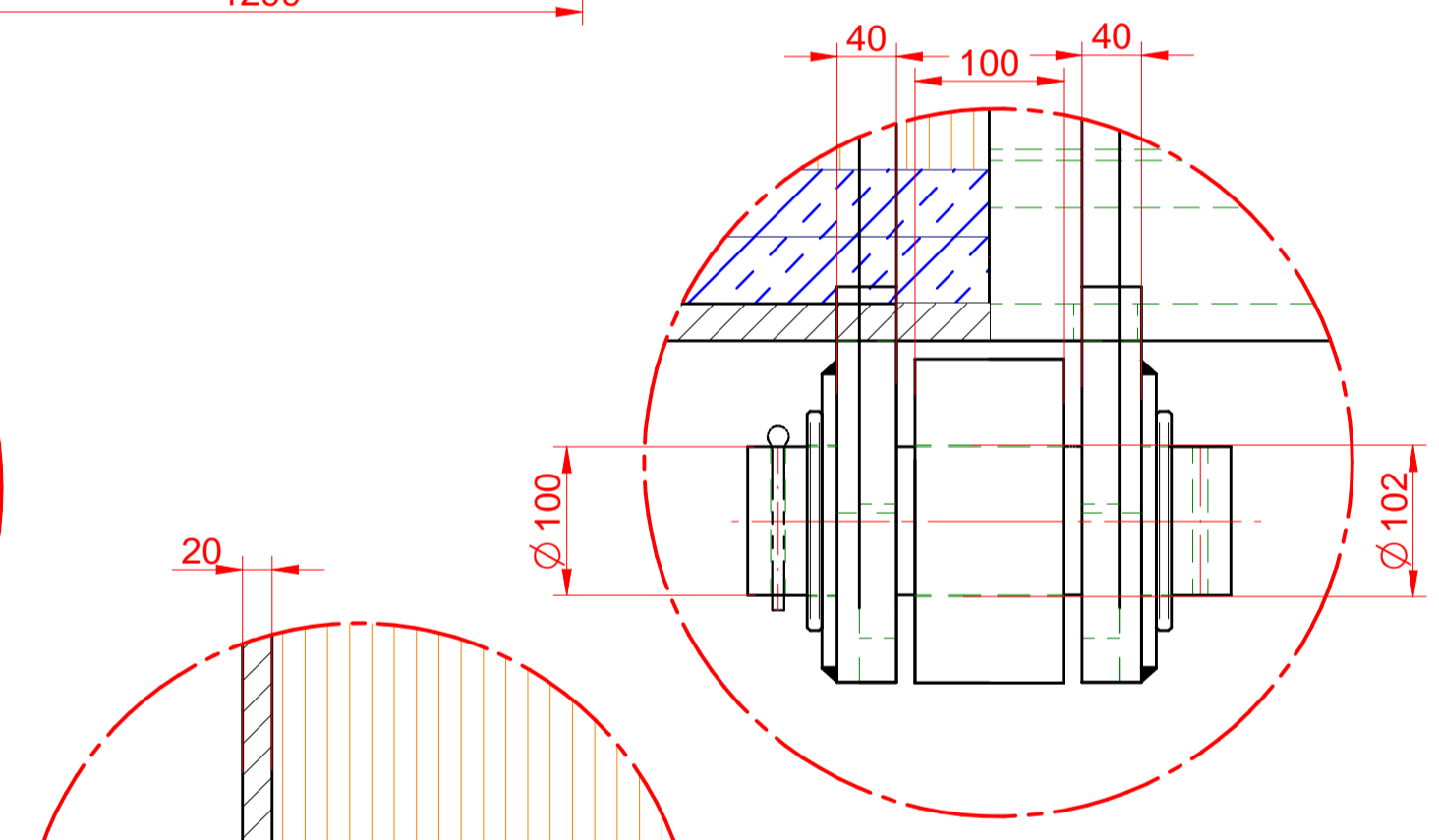
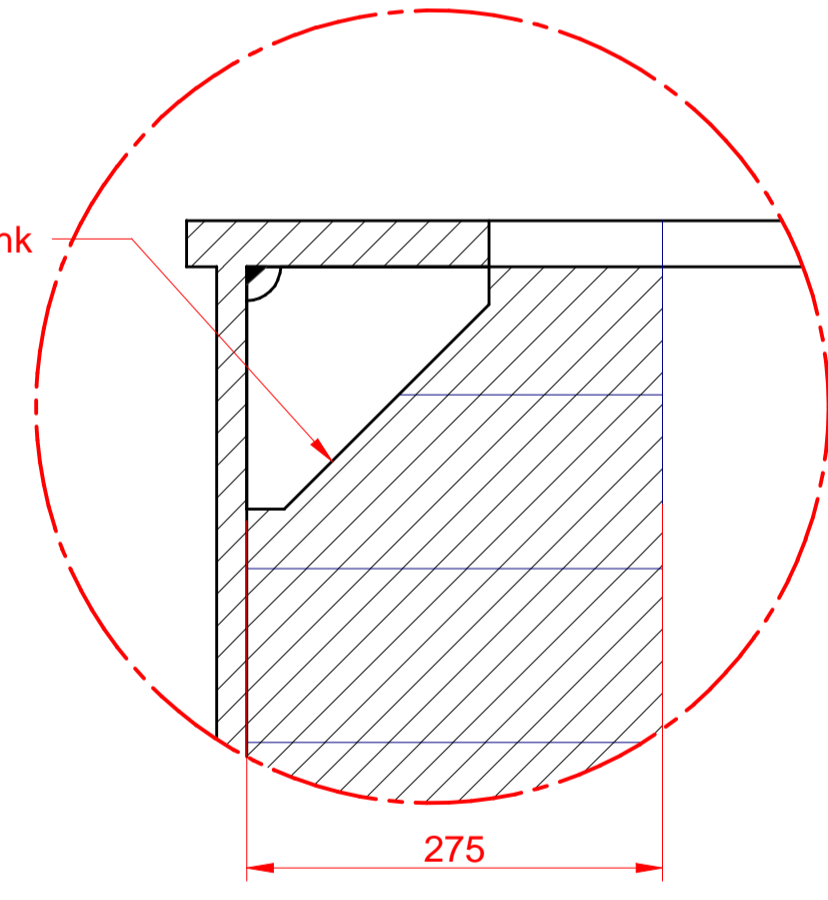
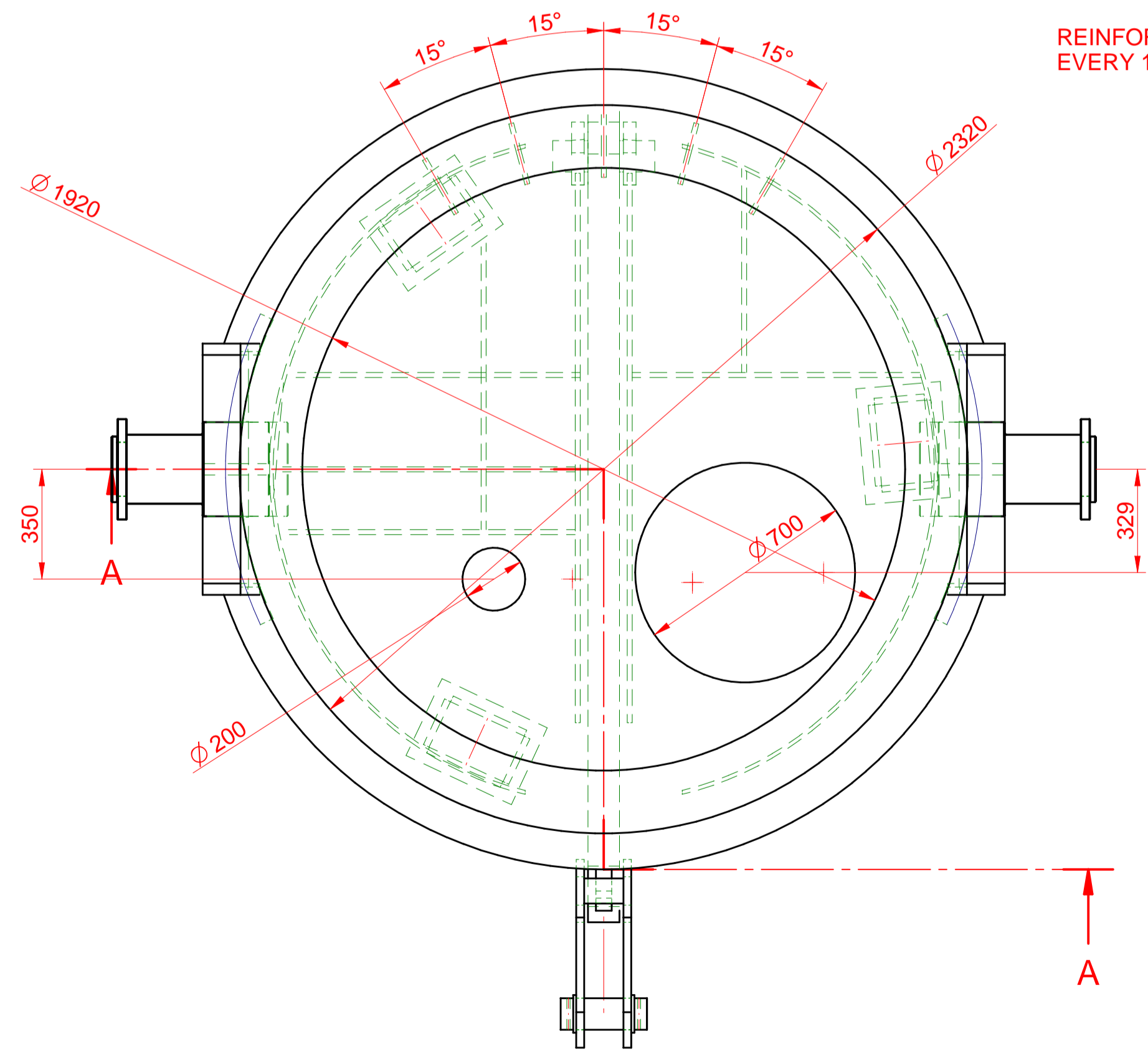
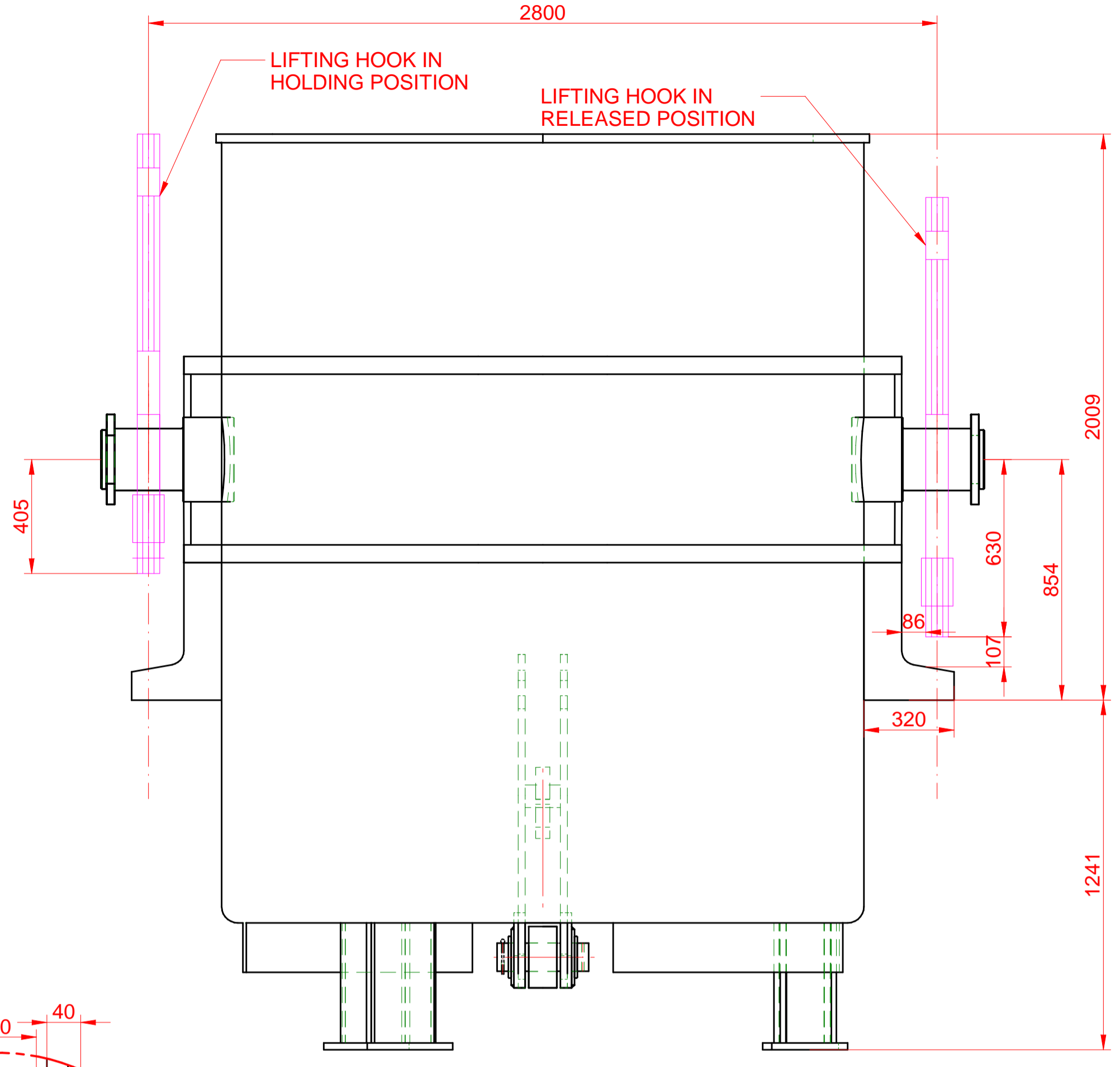
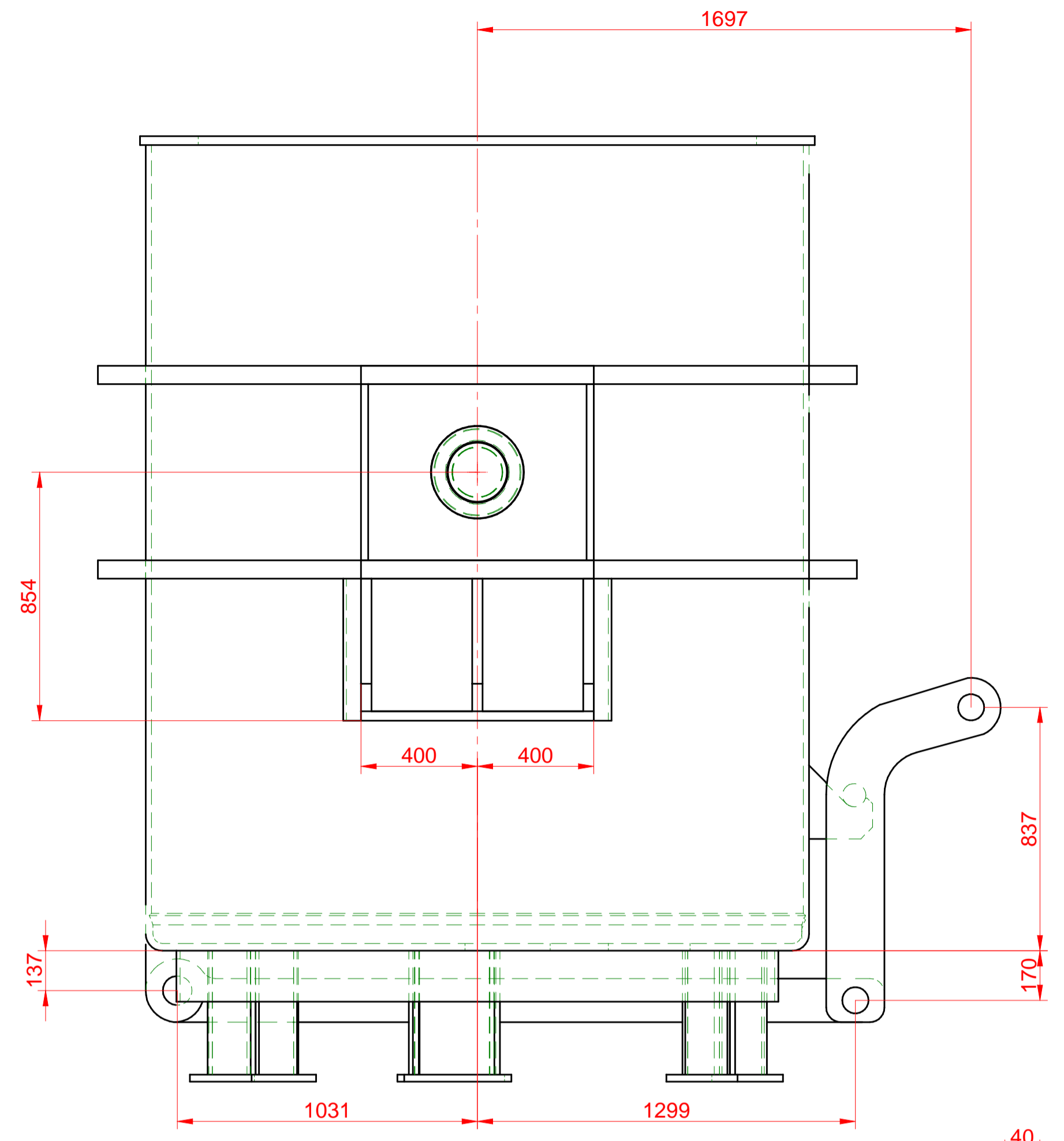
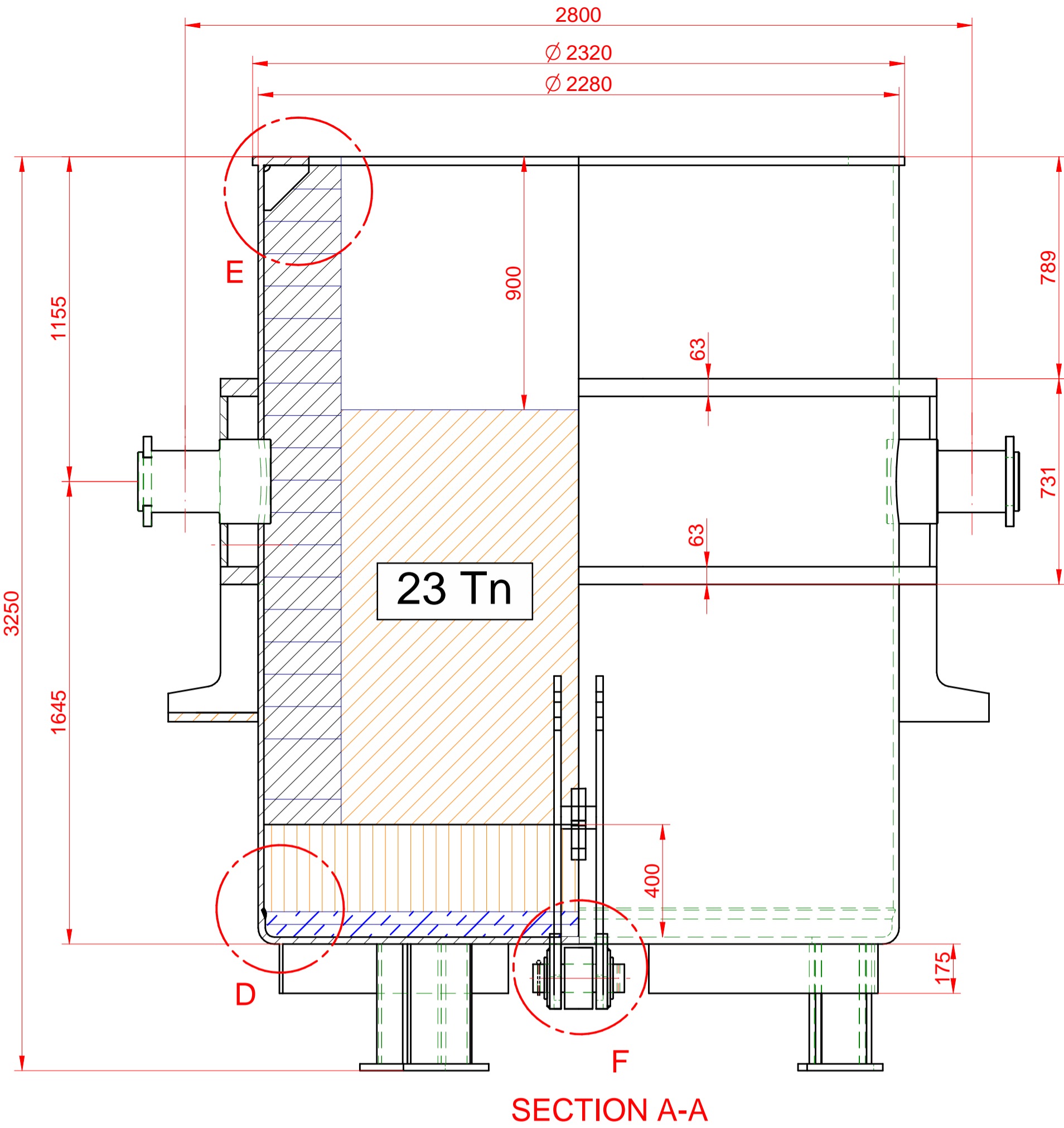
DETAIL D
1:5



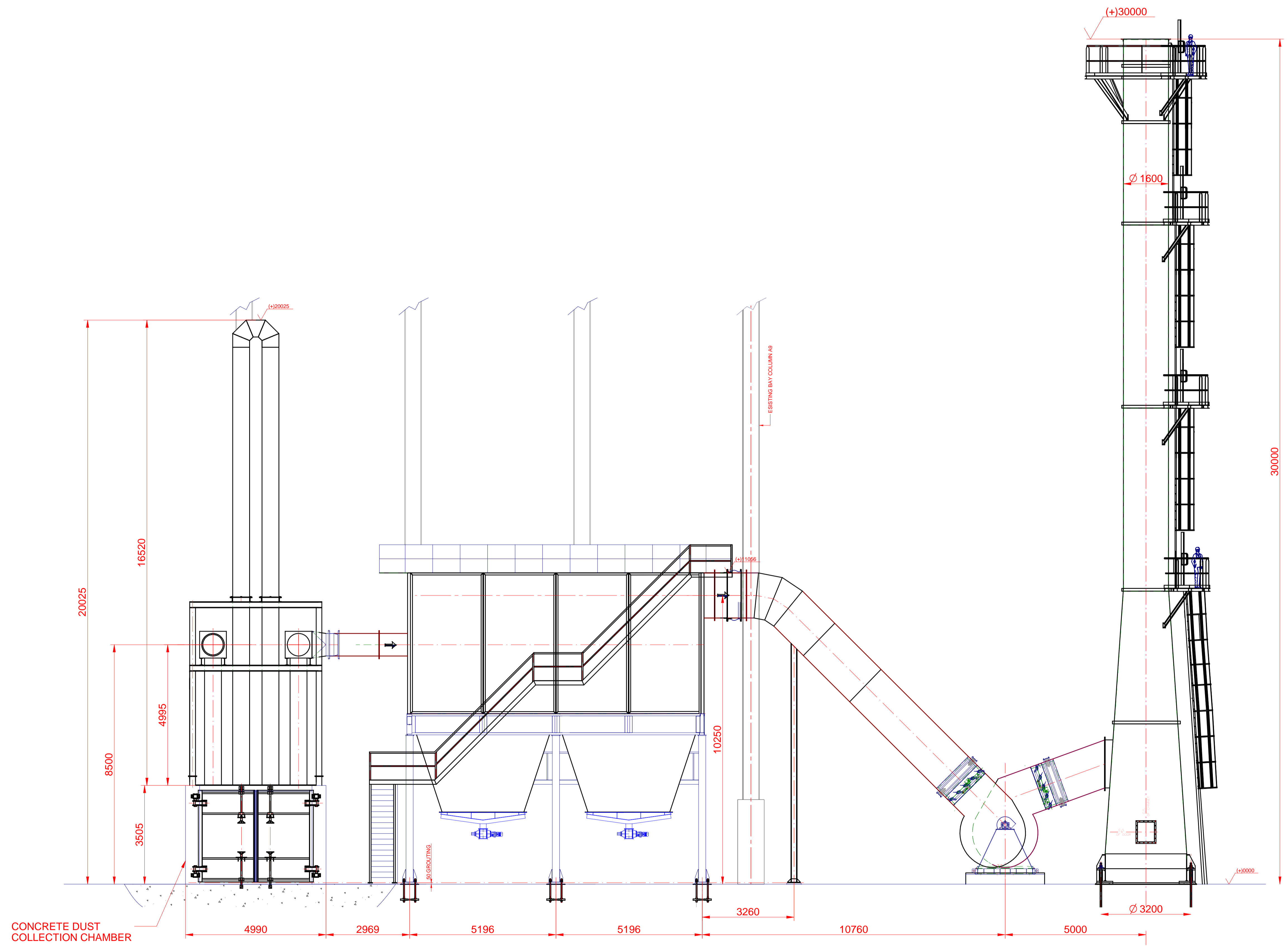
DETAILS OF LIFTING HOOK
1:10

LADLE FOR S.S

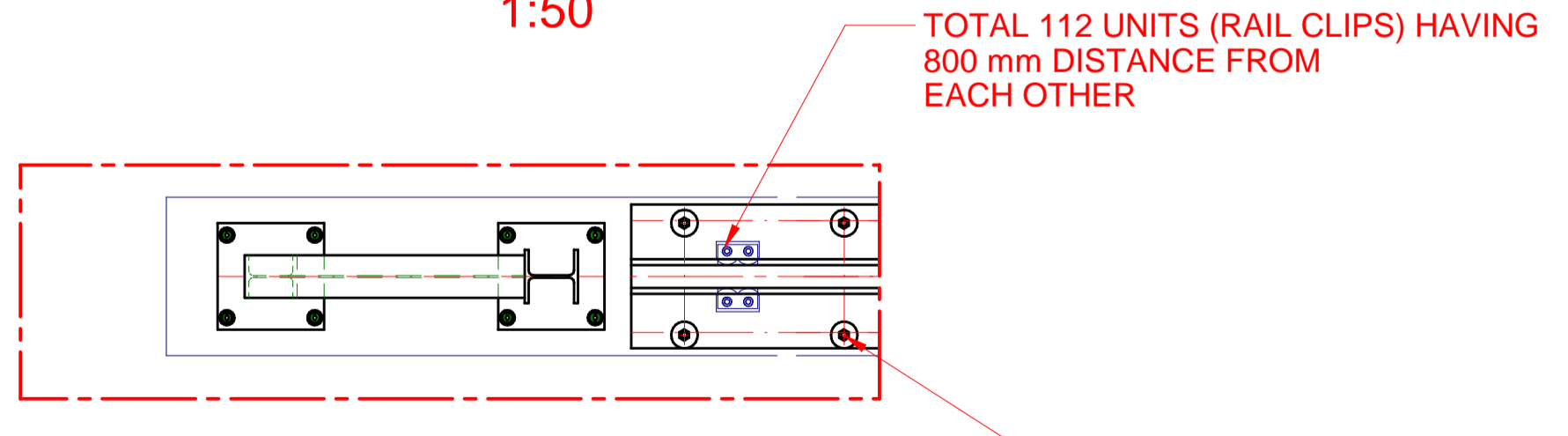
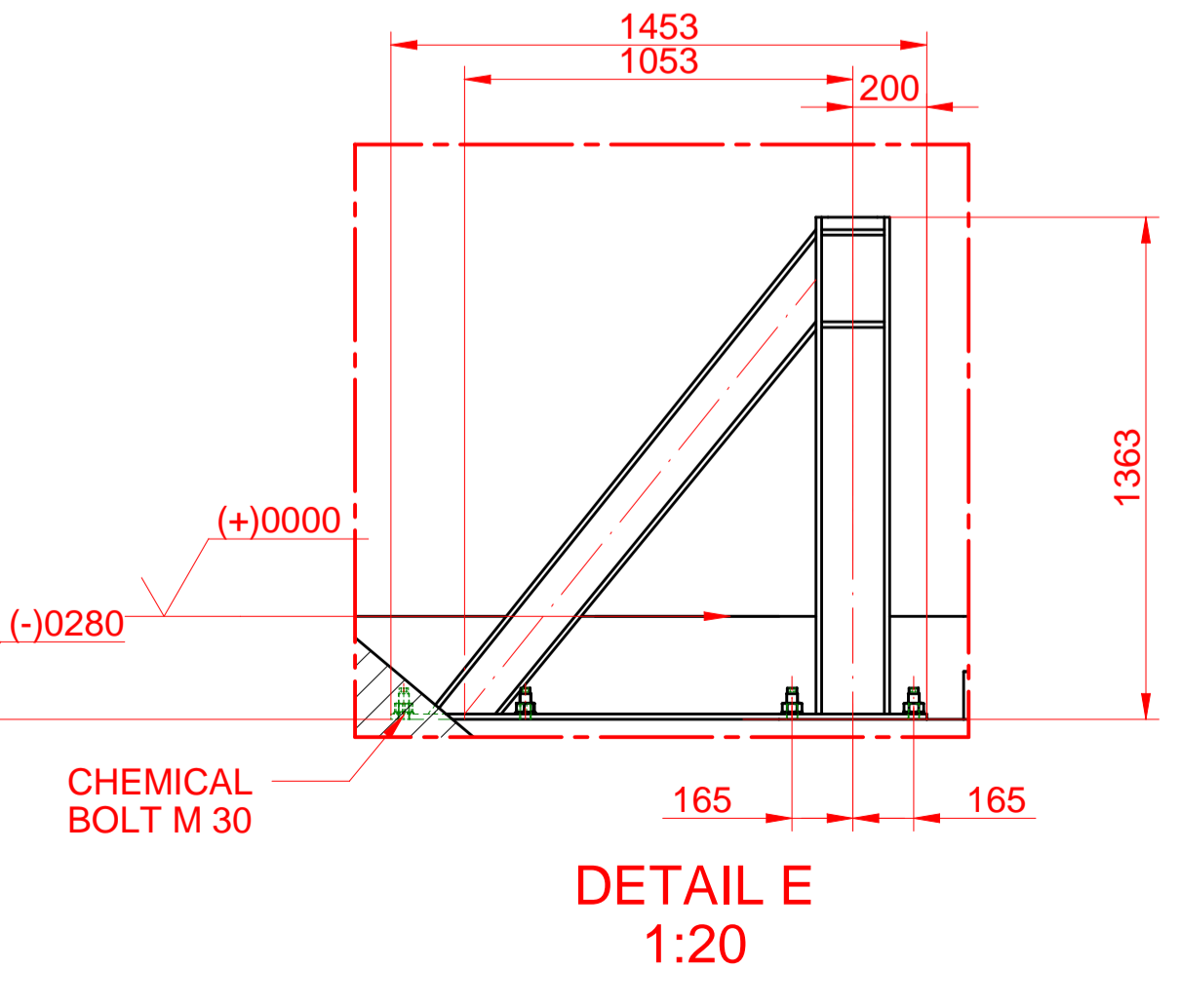
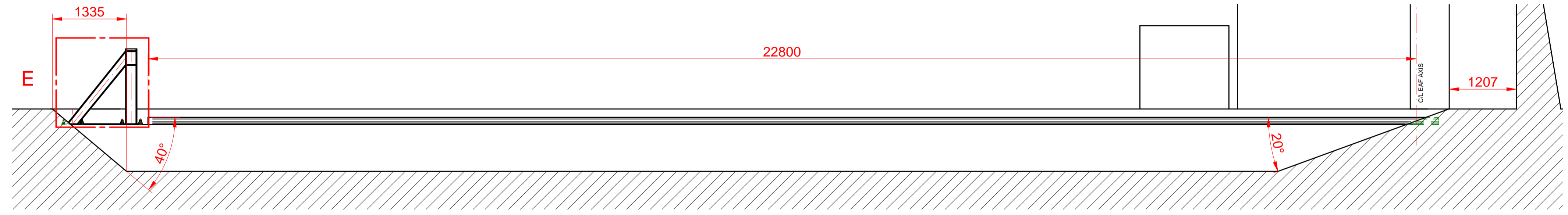
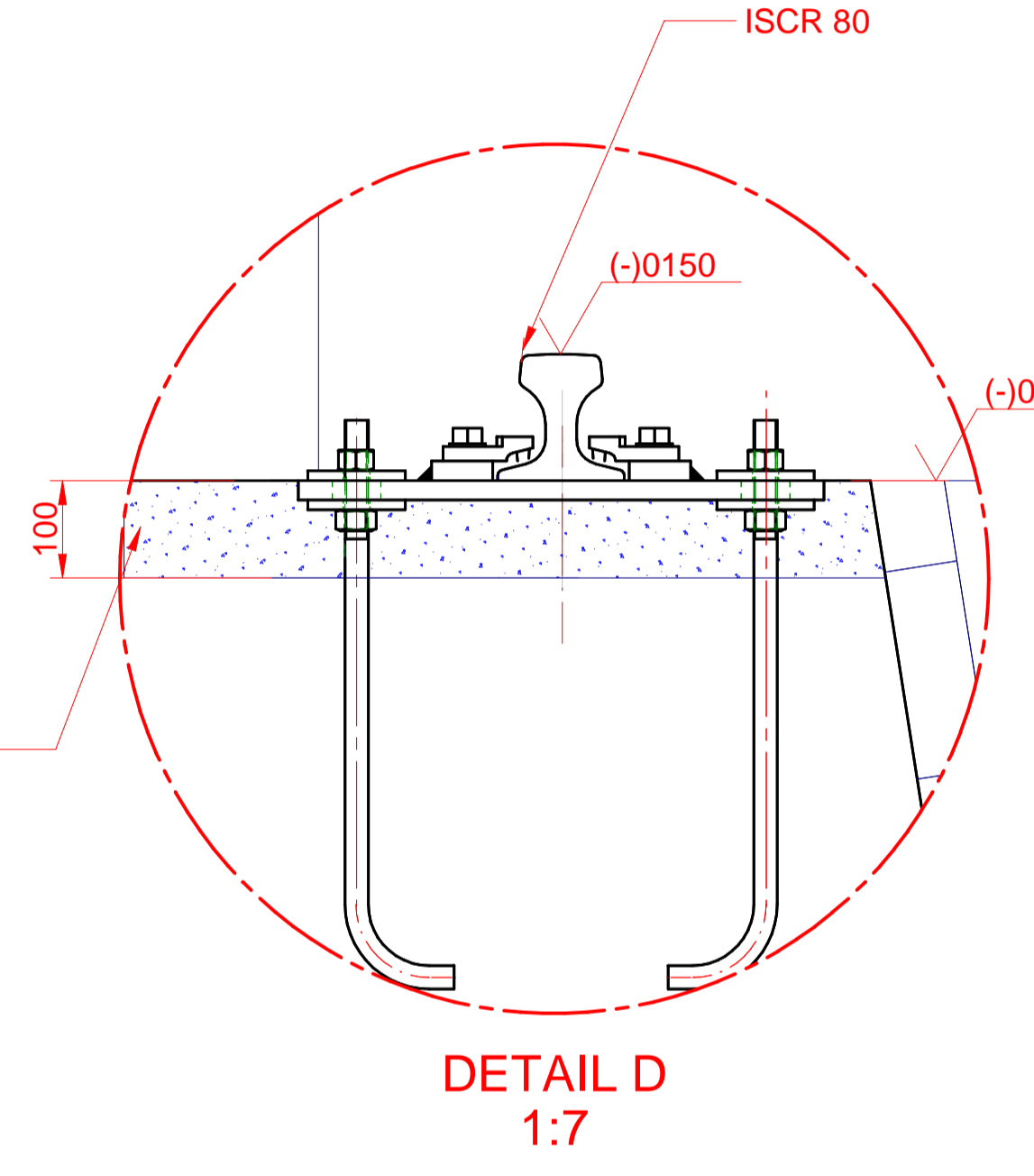
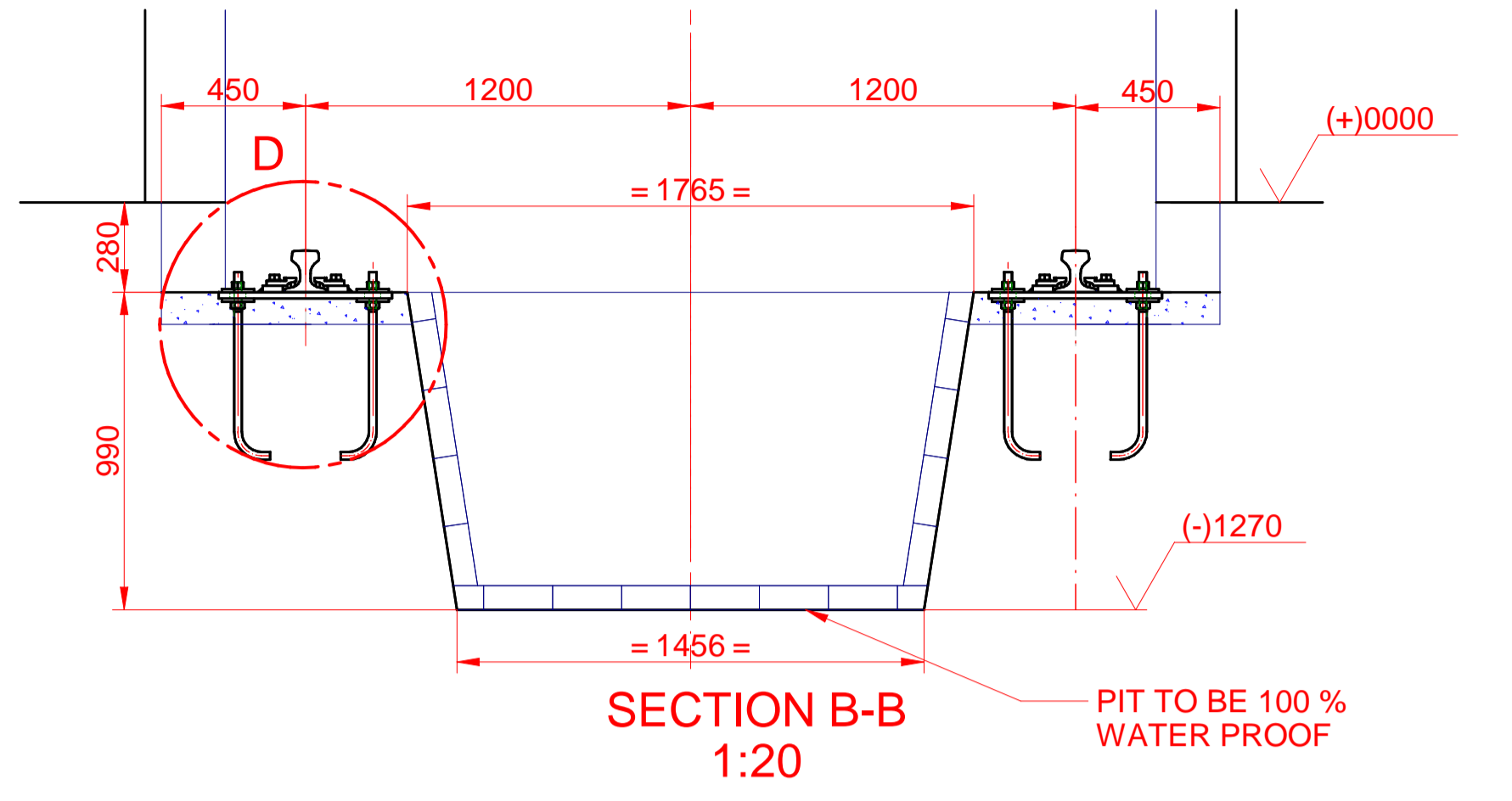
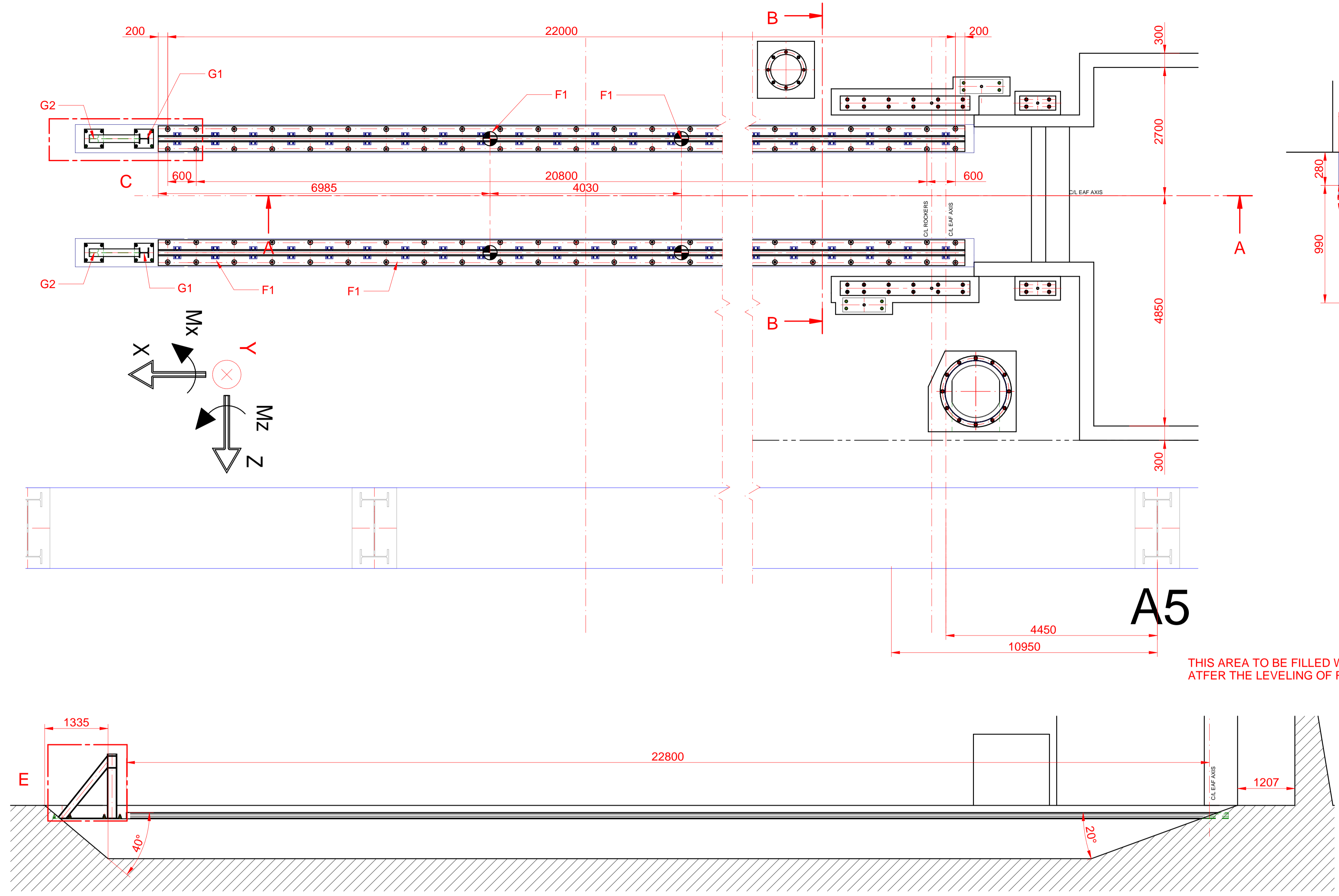
INDEX	DATE	NAME	CUSTOMER INFORMATION	DRAWING NO.	Page of
03	29/09/2011	V. Raghupatuni	MODIFIED ACCORDING TO CLIENT MEETING 28.09.11	100173.1011.02.000-2_R03	1
02	26/09/2011	NALINIRANJAN	MODIFIED ACCORDING TO CLIENT MEETING 12.09.2011		
01	17/08/2011	V. Raghupatuni	MODIFIED ACCORDING TO CLIENT MEETING 06.07.11		
DESIGN GENERAL TOLERANCES ACCORDING TO ISO 2768	DESIGN GENERAL TOLERANCES ACCORDING TO ISO 2768	INDEX DATE NAME	CUSTOMER INFORMATION	DRAWING NO.	Page of
		04/07/2011 V. Raghupatuni		100173.1011.02.000-2_R03	1
		04/07/2011 V. Raghupatuni			
		04/07/2011 A. Gupta			
1:10	1011 - LF LAYOUT			Sarralle India	
	LADLE STUDY			NH-6, P.O. MAHAREKHA, MOUZA - MADHAPUR	
	ASSEMBLY			P.S. LULUBERIA, DIST. HOWRAH-711303	
				(W.B.) INDIA	
				Tel. (0991)33-26210830	
				REPLACING TO	
				REPLACING TO	
Revision	Product Ref	Mishra Dhatu Nigam			
DIN 34-1					



STRUCTURE GENERAL TOLERANCES ACCORDING TO ISO 13920	STRUCTURE GENERAL TOLERANCES ACCORDING TO ISO 13920	03	29/09/2011	V. Raghupatruni	MODIFIED ACCORDING TO CLIENT MEETING 28.09.11
		02	26/09/2011	NALINIRANJAN	MODIFIED ACCORDING TO CLIENT MEETING 12.09.2011
		01	17/08/2011	V. Raghupatruni	MODIFIED ACCORDING TO CLIENT MEETING 06.07.11
DESIGN GENERAL TOLERANCES ACCORDING TO ISO 2768	DESIGN GENERAL TOLERANCES ACCORDING TO ISO 2768	INDEX	DATE	NAME	CUSTOMER INFORMATION
		PROJEC	04/07/2011	V. Raghupatruni	CUSTOMER INFORMATION
		DRAWN	04/07/2011	V. Raghupatruni	
		CHECKED	04/07/2011	A. Gupta	
Scale	1:35	1011 - LF LAYOUT			
LADLE STUDY					
ASSEMBLY					
Mishra Dhatu Nigam					
STRUCTURE GENERAL TOLERANCES ACCORDING TO ISO 13920 DESIGN GENERAL TOLERANCES ACCORDING TO ISO 2768 Scale: 1:35 Title: 1011 - LF LAYOUT Ladle Study Assembly Mishra Dhatu Nigam					DRAWING NO. 100173.1011.02.000_R03 Page of 1 Sarralle India NH-6, P.O. MAHESREKHA, MOUZA - MADHAPUR P.S. LULUBERIA, DIST. HOWRAH-711303 (W.B.) INDIA Tel: (0991)33-26210830 REPLACING TO: REPLACING TO:



STRUCTURE GENERAL TOLERANCES ACCORDING TO ISO 13920		STRUCTURE GENERAL TOLERANCES ACCORDING TO ISO 13920		STRUCTURE GENERAL TOLERANCES ACCORDING TO ISO 13920		STRUCTURE GENERAL TOLERANCES ACCORDING TO ISO 13920	
02	30/09/2011	V. Raghupatuni	MODIFIED AS PER CLIENT MEETING 28.09.11				
01	26/09/2011	V. Raghupatuni	MODIFIED AS PER CLIENT MEETING 12.09.11				
DESIGN GENERAL TOLERANCES ACCORDING TO ISO 2768		DESIGN GENERAL TOLERANCES ACCORDING TO ISO 2768		DESIGN GENERAL TOLERANCES ACCORDING TO ISO 2768		DESIGN GENERAL TOLERANCES ACCORDING TO ISO 2768	
INDEX	DATE	NAME	CUSTOMER INFORMATION				
PROJECTED	23/06/2011	V. Raghupatuni	CUSTOMER INFORMATION				
DRAWN	23/06/2011	V. Raghupatuni	CUSTOMER INFORMATION				
CHECKED	23/06/2011	A. Gupta	CUSTOMER INFORMATION				
SCALE	TITLE						
1:75	1016 - LAYOUT FES						
LAYOUT FES							
SIDE VIEW							
MISHRA DHATU NIGAM LIMITED							
PROJECTION		FIRST ANGLE		DIN 34-1		REPLACING TO	
DRAWING NO.		100173.1016.02.000_R02		DRAWING NO.		100173.1016.02.000_R02	
Page 2 of 2							
NH-6, P.O. MAHAREKHA, MOUZA - MADHAPUR P.S. LULIBERIA, DIST. HOWRAH-711303 (W.B.) INDIA Tel. (0991)33-26218830		REPLACING TO					



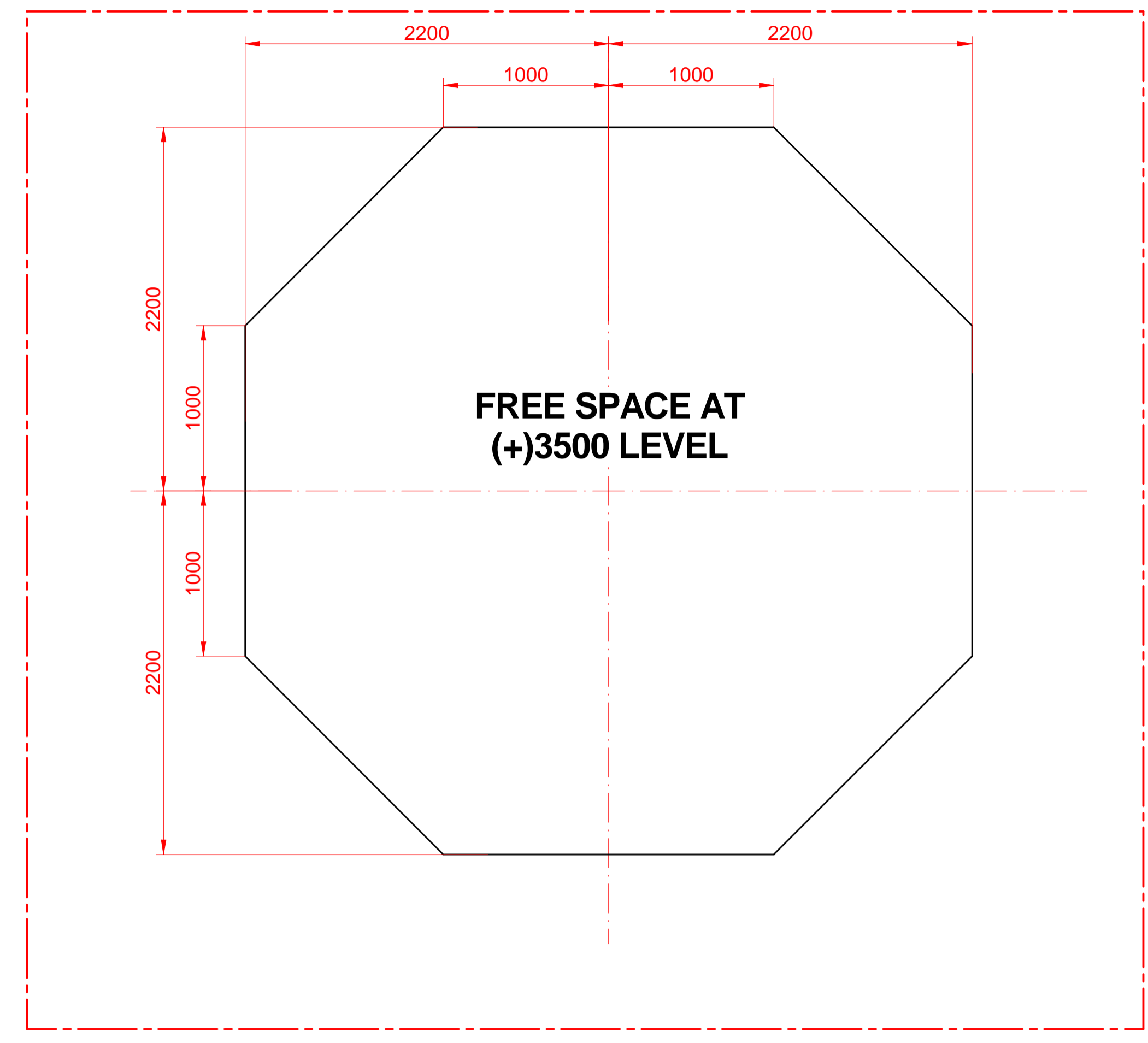
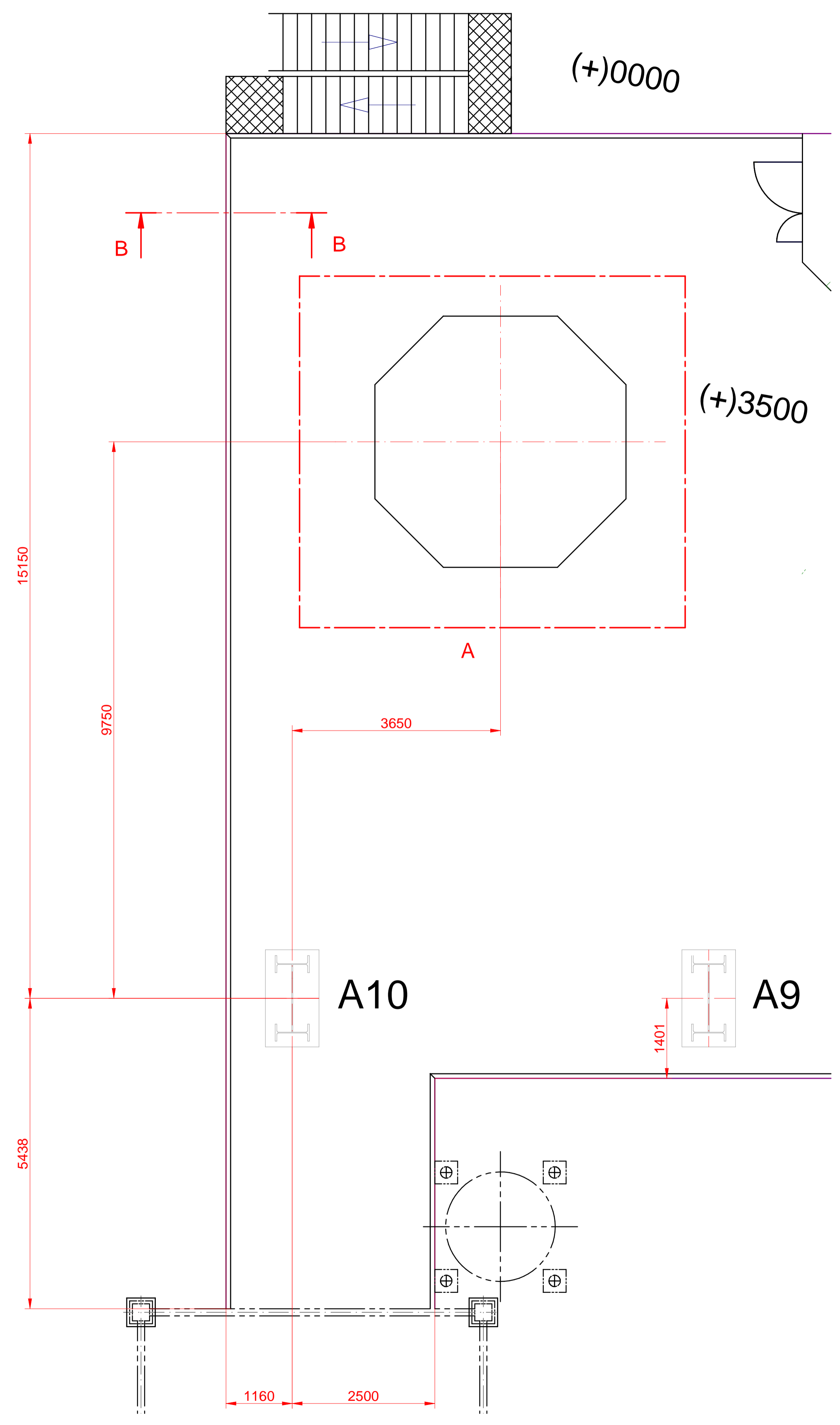
TRACK GAUGE CENTER	A = ±3 mm L < 15 m	INCLINATION RAIL TO EACH OTHER (CONVERSION)	E = 0.5 %
POSITION OF RAIL IN GROUND PLAN	B = ±5 mm b = ±1 mm IN 20 m DISTANCE	POSITION OF THE END STOPS BUFFERS TO EACH OTHER	F = 0.7 % OF L max 20 mm
HEIGHT OF RAIL (AXIAL SLOPE)	C = ±10 mm c = ±1 mm IN 20 m DISTANCE	DEVIATION OF THE RAIL HEAD FROM THE HORIZONTAL	G = ± 3% OF THE WIDTH OF THE RAIL HEAD. (WITH A FLAT UPPER RAIL SURFACE)
HEIGHT OF THE RAIL TO EACH OTHER (TRANSVERSE SLOPE)	D = ±0.2 % OF L max ± 10 mm		

CARGAS (Fuerzas en kN y momentos en kN.m)						
LOADS (Forces [kN] and Moments [kN.m])						
Zone	Fx	Fy	Fz	Mt/x	Mt/z	Load type
F1 Ladle car (Force on contact point of each wheel of the car) Level +0000	0	188	0	-	-	Static
	± 13	250	± 31	-	-	Dynamic
	± 23	-	-	-	-	Seismic X
G1 Ladle car Stopper Level -130	-	-8	-	-	-	Static
	75	- 113	-	-	-	Dynamic
	± 1	-	-	-	-	Seismic X
G2 Ladle car Stopper Level -130	-	-8	-	-	-	Static
	75	113	-	-	-	Dynamic
	± 1	-	-	-	-	Seismic X
	-	-	± 1	-	-	Seismic Z

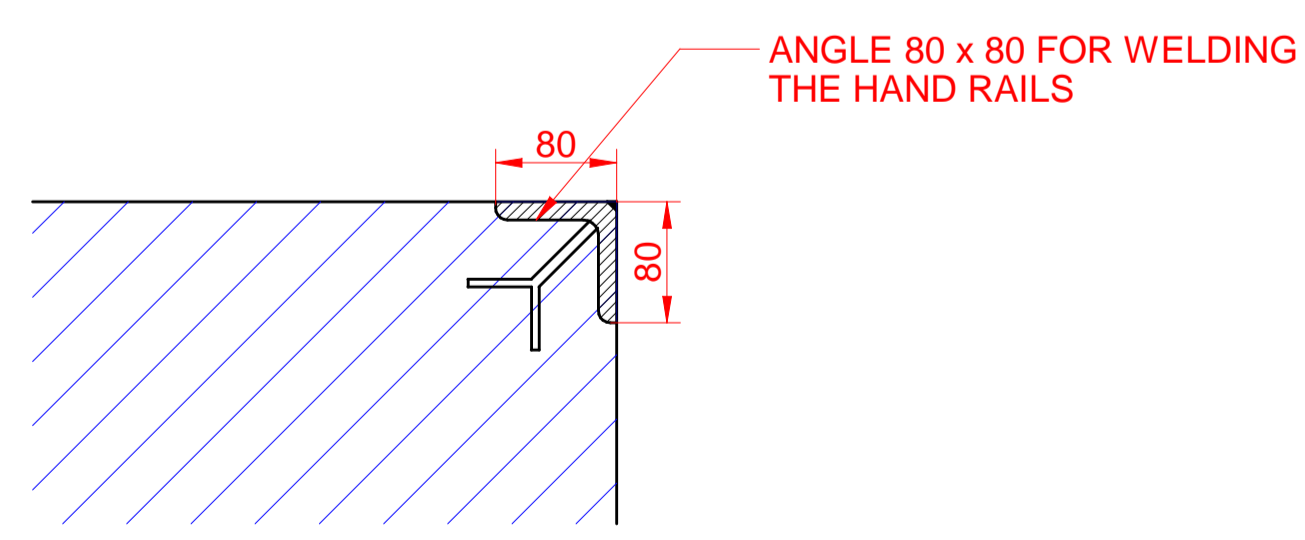
STRUCTURE GENERAL TOLERANCES ACCORDING TO ISO 13920	STRUCTURE GENERAL TOLERANCES ACCORDING TO ISO 13920	INDEX	DATE	NAME	MODIFIED AS PER CLIENT MEETING 28.09.11
DESIGN GENERAL TOLERANCES ACCORDING TO ISO 2768	DESIGN GENERAL TOLERANCES ACCORDING TO ISO 2768	DATE	DATE	NAME	CUSTOMER INFORMATION
SCALE	SCALE	15/09/2011	15/09/2011	V. Raghupatni	CUSTOMER INFORMATION
		15/09/2011	15/09/2011	V. Raghupatni	CUSTOMER INFORMATION
				M. A. Irate	CUSTOMER INFORMATION
1030 - EAF SHAPES & LOADS					
EAF & CAR RAILS SHAPES & LOADS					
ASSEMBLY					
Mishra Dhatu Nigam					

100173.1030.01.000-2_R01

Sarralle India
NH-6, P.O. MAHESREKHA, MOUZA - MADHAPUR
P.S. LULUBERIA, DIST. HOWRAH-711303
(W.B.) INDIA
Tel. (0991)33-26210830
REPLACING TO REPLACING TO



DETALLE A
1:25



SECTION B-B
1:5

STRUCTURE GENERAL TOLERANCES ACCORDING TO ISO 13920		STRUCTURE GENERAL TOLERANCES ACCORDING TO ISO 13920		INDEX		DATE		NAME		CUSTOMER INFORMATION	
01		30/09/2011		V. Raghupatruni		MODIFIED AS PER CLIENT MEETING 28.09.11				DRAWING NO.	
DESIGN GENERAL TOLERANCES ACCORDING TO ISO 2768		DESIGN GENERAL TOLERANCES ACCORDING TO ISO 2768		22/09/2011		V. Raghupatruni				100173.1038.02.000_R01	
22/09/2011		V. Raghupatruni		22/09/2011		M. A. Iriarte				Page 1 of 1	
SCALE		TITLE		1:50		1038 - VD / VOD SHAPES & LOADS				Sarralle India	
		VD/VOD WORKING PLATFORM +3500								NH-6, P.O. MAHAREKHA, MOUZA - MADHAPUR P.S. LULUBERIA, DIST. HOWRAH-711303 (W.B.) INDIA Tel. (0991)33-26210830	
Production Rule: Product Ref: DIN 34-1		E888888		Mishra Dhatu Nigam						REPLACING TO	